



jordan fishwick

DIDSBURY
Langham Court



Langham Court, Didsbury, M20 2PX

£220,000

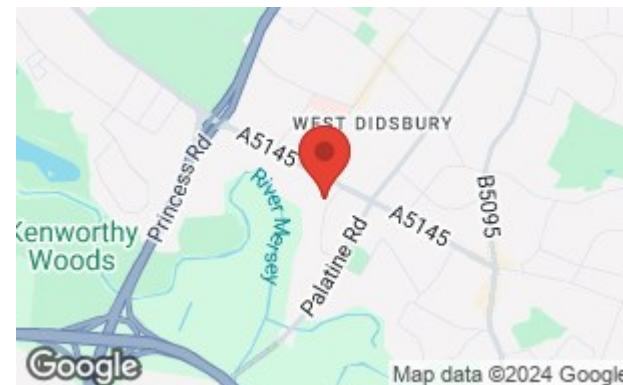


The Property

A spacious two bedrooomed ground floor apartment, with a private balcony and set in a great location within a desirable and secluded development in fashionable West Didsbury. 773 sq ft. The apartment is in need of general updating and improvement, double glazing is installed, in outline comprising:- A generous entrance hall with walk-in cloaks cupboard and intercom, spacious lounge with patio doors opening to the balcony, master bedroom with walk in bay window and en-suite shower room, additional bedroom with fitted wardrobes and separate wc. The development lies within mature and well tended gardens and grounds with residents parking and garage. No onward chain.

Directions

M20 2PX



- A two bed ground floor apartment
- Master bed with ensuite shower room
- Private balcony overlooking gardens
- Walking distance to West Didsbury & The Village
- In need of updating & improvement
- Spacious lounge & separate dining room
- Parking & garage
- No chain

Postcode - M20 2PX

EPC Rating - C

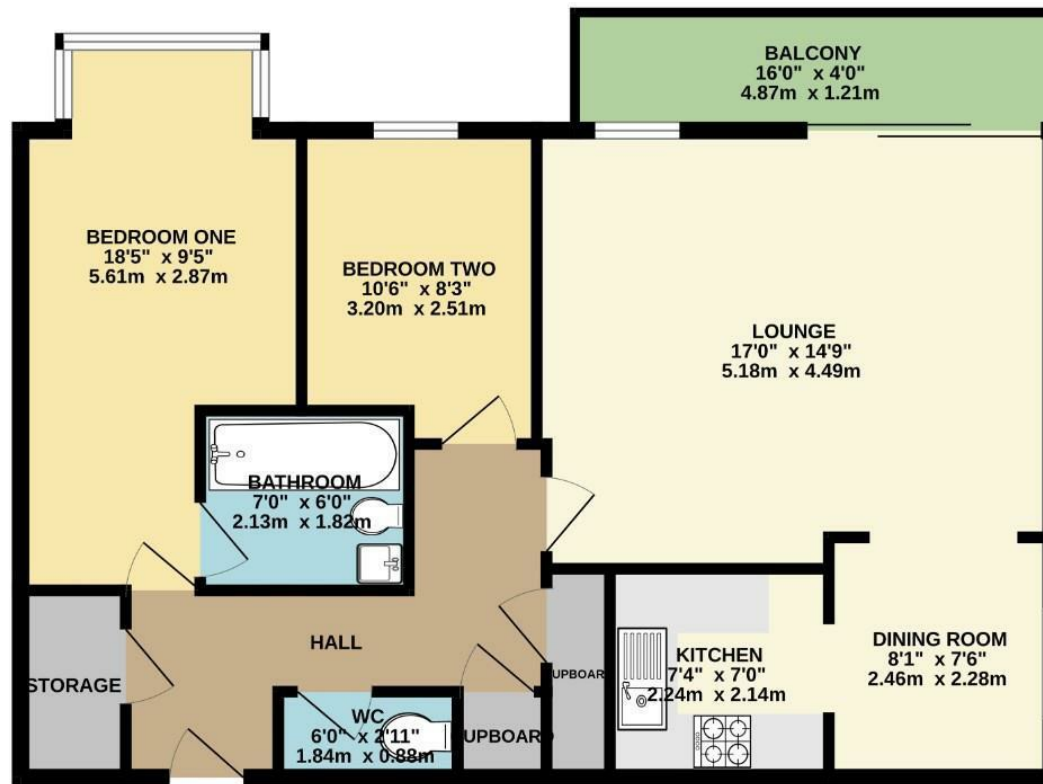
Floor Area - 773.00 sq ft

Local Authority - Manchester City Council

Council Tax - C



GROUND FLOOR
773 sq.ft. (71.9 sq.m.) approx.



TOTAL FLOOR AREA: 773 sq.ft. (71.9 sq.m.) approx.
Measurements are approximate. Not to scale. Illustrative purposes only.
Made with Metropix ©2024



These particulars are believed to be accurate but they are not guaranteed and do not form a contract. Neither Jordan Fishwick nor the vendor or lessor accept any responsibility in respect of these particulars, which are not intended to be statements or representations of fact and any intending purchaser or lessee must satisfy himself by inspection or otherwise as to the correctness of each of the statements contained in these particulars. Any floorplans on this brochure are for illustrative purposes only and are not necessarily to scale.

Offices also at: Wilmslow, Macclesfield, Hale, Sale, Chorlton, Glossop, Manchester & Salford

757-759 Wilmslow Road, Didsbury Village, Manchester

0161 445 4480

didsbury@jordanfishwick.co.uk
www.jordanfishwick.co.uk